

NISSAN DIESEL AMERICA, INC.

TECHNICAL BULLETIN GE-34

DATE: NOVEMBER 28, 2005
MODEL YEAR: 2005 AND 2006
ENGINE MODEL: J05D-TA and J08E-TE
CHASSIS MODEL: UD1300 ~ UD3300
BULLETIN NUMBER: GE-34
FILE IN THE GENERAL SECTION OF THE TECHNICAL BULLETIN BINDER

PRE-HEATER RELAY RESISTANCE CORRECTION

DETAILS

The 2005 & 2006 UD Trucks Service Manual CD's have incorrectly listed the resistance values for the pre-heater relay (glow plug relay) for the J05 and J08 engines. The relay illustration for the J05 is also incorrect.

Reference Engine Section / Fuel Control page DN02-65 for (J05) and DN02-66 (J08).

CORRECTION

The pre-heater relay should have the following correct resistance values in the diagnostic flow charts:

- Step 1 - 4.5Ω to 9.5Ω
Step 2 - 6.0Ω to 7.6Ω

The illustration of the relay on DN02-65 for (J05) is also incorrect. The illustration should be the same as the illustration found on page DN02-66 (J08).

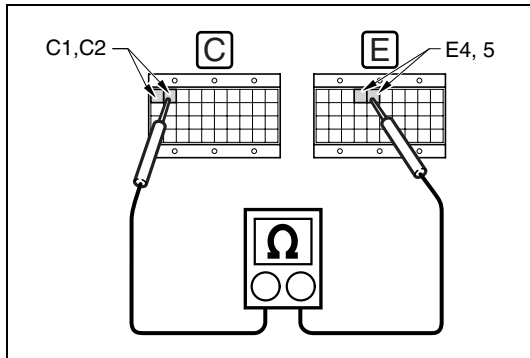
The following page reflects the correct values and illustration. The 2007 UD Trucks Service CD will reflect the corrections.

Table with 2 main sections: 'THE INFORMATION CONTAINED IN THIS BULLETIN SHOULD NOT BE INTERPRETED AS THE BASIS FOR WARRANTY CLAIMS' and 'FOR THE INDICATED PERSONNEL BELOW, PLEASE READ, INITIAL, AND ROUTE TO THE FOLLOWING:'. The second section contains a grid for initials with columns for Service Manager, Warranty Manager, Service Technicians, and Parts Manager/Shop Foreman.

AIR INTAKE PREHEATER RELAY

EN16ABC02F200032

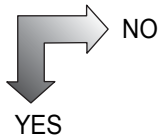
DTC	P0540	Preheat circuit malfunction
-----	-------	-----------------------------



1. CHECK THE RESISTANCE BETWEEN TERMINALS.

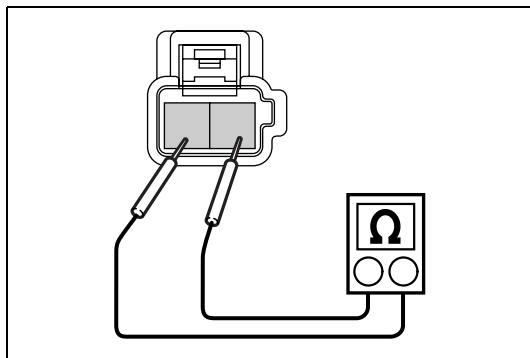
- (1) Set the starter switch to "LOCK" position and connect the signal check harness.
- (2) Disconnect the connector of the signal check harness (ECU side).
- (3) Measure the resistance between GRY (C1,C2) and PGD (E4, E5) terminals.

Standard: 4.5 — 9.5 Ω



Proceed to 2.

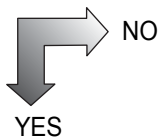
- Malfunction of ECU
- Malfunction of ECU connectors



2. CHECK THE RESISTANCE OF PREHEATER RELAY.

- (1) Remove the preheater relay.
- (2) Measure the resistance between terminals of preheater relay.

Standard: 6.0 — 7.6 Ω



Malfunction of preheater relay

- Malfunction of harness
- Malfunction of connectors